

MCCULLOCH 4-H NEWS UPDATE

Texas A&M AgriLife Extension McCulloch County MAY 2024

Carrie Ross, CEA-FCH

carrie.ross@ag.tamu.edu

Sarita Short CEA-ANR

sarita.short@ag.tamu.edu

114 W. Main St. Brady, TX 76825

Phone: 325-597-1295

Fax: 325-597-3023

<http://mcculloch.agrilife.org/>



4-H ENROLLMENT

The 2023-2024 4-H year began on September 1. All 4-H members will need to enroll on 4-H Online

<https://v2.4honline.com/#/user/sign-in>

Enrollment is \$30. All youth participants must be enrolled in 4-H online before entering any contests, camps, or special events.

If you know anyone interested in joining 4-H, but can't afford the enrollment fee, please let us know. We have need based scholarships available for incoming members. The enrollment scholarship fund was started by a generous donation from the Central Texas Master Gardeners.

MCCULLOCH 4-H

We are working on plans for an end of the year 4-H party. Please stay tuned for more information. Party plans will be shared by email, Remind, and Facebook.



IT'S RECORDBOOK TIME!

Each year, 4-H members of all ages are encouraged to complete a record book to document his/ her involvement throughout the year. This has many benefits including building writing and organizational skills, setting goals, and preparing for leadership opportunities. Record books are used as part of local officer elections and help prepare members to apply for scholarships as seniors. We will be holding record book workshops in June and **completed record books will be due on Friday, June 14.**

COUNTY COUNCIL OFFICERS.

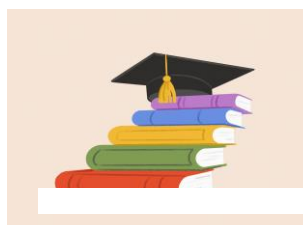


If you are interested in taking on a more active leadership role in 4-H, contact Carrie or Sarita. **Upcoming leadership opportunities include- Leadership Lab, Multi-County Camp, Texas 4-H Roundup, and applying for Ambassador programs.**

4-H GRADUATING SENIORS

The end of the schoolyear is quickly approaching, and we would like to take recognize our graduating seniors. This outstanding group of seniors have represented McCulloch County well and they will soon head off to chase new goals. **Congratulations to Lili Appleton, Ava Dodds, Delilah Garcia, Aizley Johnson, Riley McBride, Madalyn Moerbe, and Elizabeth Probst.**

Two of these seniors, Riley McBride and Madalyn Moerbe, are in the running for Texas 4-H Foundation Scholarships. They recently interviewed in College Station and are patiently awaiting the results. We wish them good luck and look forward to getting results in mid-May.



SHOOTING SPORTS

SHOTGUN Anyone interested in Shot gun shooting sports, contact the Extension office. We will be starting practice soon. If you have any questions you can call: Rex Ewert (325) 456-6020, or the Extension Office at 597-1295.

RIFLE/ARCHERY interested in rifle or archery contact Michael Jordan 325-792-6272.

Meetings will be Sundays, 1:30 pm at County Barn

May 4 HOT Fun Shoot Rifle/Archery at Brady Lake Range

REGISTRATION IS OPEN FOR 4-H ROUNDUP

Registration opens for Texas 4-H Roundup from May 1- May 13. All senior 4-H members planning to attend need to register on 4-H online. We plan on having participants in the scholarship banquet, wool judging, and livestock judging contest as well as the FCS signing day. If you plan to attend Roundup, please call the office and let Carolyn know which contests/ activities you are participating in so we can make sure we have adequate lodging and transportation. More information can be found here, <https://texas4-h.tamu.edu/events/roundup/>

LEADERSHIP LAB

**June 19-21, 2024 Alto Frio Baptist Camp Leakey, TX \$200
Deadline: May 20, 2024**

Ask about our scholarships.

Leadership Lab is our annual Leadership camp for 4-H members from ages 13-18. This event provides a variety of leadership, recreation, and project enhancement workshops that participants are challenged to take back to their own county and implement. District 4-H Council Delegates from the 21 counties are highly encouraged to attend and participate in the District 4-H Council Business Meeting which includes the election of the District Council Officers for the new 4-H year. Candidates for District 4-H Council will present their campaign speech and participate in a question/answer session in front of the voting delegates.



2024 SUMMER CAMP DATES

Horizons Camp- June 30-July 4

Early Bird Price \$375 After April 15, 2024 \$425

Prime Time I- July 7-July 10

Early Bird Price \$300 After April 15, 2024 \$350

Aperture Camp- July 7-July 10

Early Bird Price \$300 After April 15, 2024 \$350

County Camp I- July 14-July 18

Early Bird Price \$375 After April 15, 2024 \$425

Prime Time II- July 21-July 24

Early Bird Price \$300 After April 15, 2024 \$350

County Camp II- August 4-August 8

Early Bird Price \$375 After April 15, 2024 \$425

WOOL JUDGING

The McCulloch 4-H Wool Judging team is putting in the work to compete well at the District 7 contest on May 10. Several members traveled to College Station to participate in a Wool Judging Clinic. There is still time to join the team if you are interested. Wool Judging practice Wednesdays, 6:00 pm at G. Rollie. The District contest is May 10 in San Angelo. Thank you Teresa and Darrell Keese.

HORSE GROUP

Meeting May 9 & 23 5:00 pm at Extension Office

The Horse Club will be meeting every other Thursday at 5 PM at the Extension Office until ready to begin with live horses.

MAJOR SHOW TAGS

Major Show Steer Tags, State Fair Sheep/ Goat/Swine

Validation fee for **Steers \$25** per head **March 1-April 5**

Sheep/Goat Tags are \$15 per head **Deadline April 8**

Swine Tags are \$ 15 per head Deadline April 30

Please call the Extension Office with your orders.

LIVESTOCK SHOW

The Buyers list has been mailed to each participant. All thank you notes for buyers will be due in the Extension Office when checks are ready. MCJLA Scholarship Application Deadline was April 26.

STAY CONNECTED WITH MCCULLOCH 4-H

Join our Remind group to receive messages about meeting times, community service projects, and other club news by **sending a text message to 81010 and enter the code @62fb6b** as the message of the text. Project specific Remind groups will be available after the start of the project year.

You can also follow us on Facebook, like and follow McCulloch County 4-H for important reminders and updates.

STATE AND NATIONAL 4-H EVENTS

<http://link.4-h.org/m/1/68774702/02-b21098a8e50ca9d2344296a3396c3c57a0efd5/3/615/bfeef303-ff75-4007-bf0d-1abe2de85e82>

FACEBOOK

Visit our Facebook pages to see the latest local 4-H information and “like” so that you can get the updates and pictures:

MCCULLOCH COUNTY 4-H

<https://www.facebook.com/search/top?q=mcculloch%20county%204-h>

MCCULLOCH COUNTY FAMILY AND CONSUMER HEALTH

<https://www.facebook.com/search/top?q=mcculloch%20county%20family%20%26%20community%20health>

MCCULLOCH COUNTY AG & NATURAL RESOURCES

<https://www.facebook.com/McCulloch-County-AgriLife-Ag-Natural-Resources-Agent-92197864501206/>

McCULLOCH EXTENSION WEBPAGE

Quick links are located on the page and our latest Newsletter. <https://mcculloch.agrilife.org/>

EXPLORE

Each guide has been developed to support volunteers, County Extension Agents, and even 4-H members, in leading project experiences for youth. There are six lessons in each book that follow the “do, reflect, apply” model of learning, providing guidance for hands-on exploration and learning about a specific topic. Click the topic name below to download the file to your computer or device.

<https://texas4-h.tamu.edu/resources/>

- [Ag Product ID](#)
- [Beginning Beekeeping](#)
- [Beef](#)
- [Clothing & Textiles – Duds To Dazzle](#)
- [Clothing & Textiles – Sewing Basics](#)
- [Consumer Education](#)
- [Food & Nutrition – Cooking in the Kitchen | \[Participant Survey\]\(#\) | \[Evaluation\]\(#\)](#)
- [Food & Nutrition – Dollars and Sense | \[Participant Survey\]\(#\) | \[Evaluation\]\(#\)](#)
- [Food & Nutrition – Food Challenge | \[Participant Survey\]\(#\) | \[Evaluation\]\(#\)](#)
- [Food & Nutrition – Kitchen Safety | \[Participant Survey\]\(#\) | \[Evaluation\]\(#\)](#)
- [Food & Nutrition – Keeping Food Safe | \[Participant Survey\]\(#\) | \[Evaluation\]\(#\)](#)
- [Global Opportunities Beyond Education](#)
- [Housing and Home Environment – \[Interior Design\]\(#\)](#)
- [Leadership – Personal Character Development | \[Evaluation\]\(#\)](#)
- [Leadership – Personal Leadership Development | \[Evaluation\]\(#\)](#)
- [Leadership – Within A Group](#)
- [Livestock Judging](#)
- [Outdoor Education – Team Building in Outdoor Education](#)
- [Performance Arts – Theater](#)
- [Photography | \[Evaluation\]\(#\)](#)
- [Poultry](#)
- [Public Speaking](#)
- [Rabbits-Showing | \[Evaluation\]\(#\)](#)
- [Robotics – Building Blocks of Bots | \[Evaluation\]\(#\)](#)
- [Scientific Method Lifecycle](#)
- [Sheep & Goat](#)
- [Swine Project](#)
- [Water Projects](#)
- [Water Projects – Water Filtration and Electro-coagulation](#)

MAY 2024

TEXAS A&M AGRILIFE EXTENSION SERVICE

Sunday	Monday	Tuesday	Wednesday	Thursday	Friday	Saturday
			1 7 Wool practice	2	3	4 HOT Fun Shoot
5	6 Deadline Jr Photo	7	8 6 Wool Judging	9 5:00 Horse	10 D7 Wool Judging	11
12 1:30 Rifle/Archery Mothers Day	13	14	15	16	17	18
19 1:30 Rifle/Archery	20 Deadline Leadership Lab Horseshow	21	22	23 5:00 Horse	24	25
26 1:30 Rifle/Archery	27 Holiday Memorial Day	28	29	30	31	

Let us know if you would prefer a hard copy mailed to you. Call 325-597-1295

The Texas A&M AgrLife Extension Service provides equal access in its programs, activities, education and employment, and does not discriminate on the basis of race, color, sex, religion, national origin, disability, age, genetic information, veteran status, sexual orientation or gender identity. The Texas A&M University System, U.S. Department of Agriculture, and the County Commissioners Courts of Texas Cooperating.